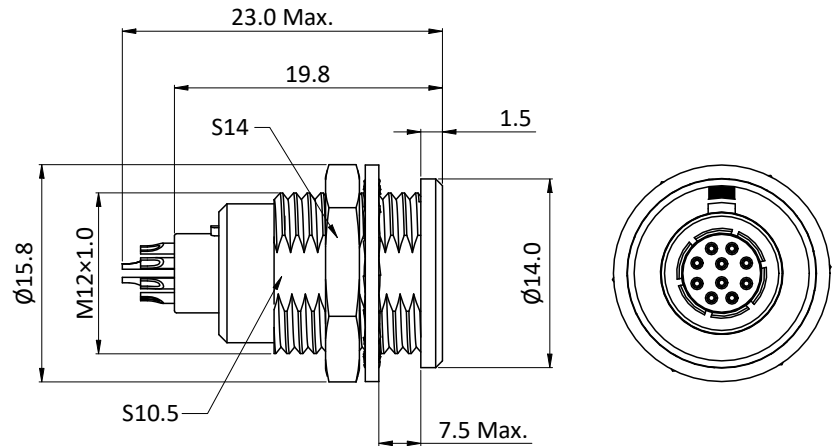


THIS DRAWING AND THE DATA DISCLOSED HEREIN OR HEREWITH IS NOT TO BE REPRODUCED USED OR DISCLOSED IN WHOLE OR IN PART TO ANYONE WITHOUT THE PERMISSION OF JESS-LINK PRODUCTS CO.,LTD.(JPC)

CUSTOMER DRAWING
DRWC-XXXXXX

REV.	ECN NO.	DESCRIPTION	MDF'D	APP'D	DATE
01		INITIAL DESIGN	Philip	Richard	11/03/2023
02					
03					

Positions	02 PIN	03 PIN	04 PIN	05 PIN	06 PIN	07 PIN	08 PIN	10 PIN	14 PIN	16 PIN
View from termination side pin part										



Note:

- Material and finish
Outer shell: Copper alloy, Cr plating
Contact: Copper alloy, gold plating over Ni
Insulator: PEEK UL94 V-1
Other parts: Copper alloy, Ni plating
- Mechanical characteristics
Insertion force: 29.4N MAX.
Extraction force: 29.4N MAX.
Mounting nut torque: 4.5 N·m MAX.
Endurance: 5000 mating cycles
Vibration: 10-2000Hz, 15g comply with EIA-364-28
Shock: 100g amplitude, half sine pulse of 6ms, no discontinuity > 1us EIA-364-27
- Electrical specifications
Contact resistance: 8.7 mOhm MAX.
After 5000 cycles: 10 mOhm MAX.
Insulation resistance: >100 MOhm
Rated current: 2PIN 15.0A (Per Pin) 3PIN 12.0A (Per Pin)
4PIN 10.0A (Per Pin) 5PIN 9.0A (Per Pin)
6&7PIN 7.0A (Per Pin) 8PIN 5.0A (Per Pin)
10PIN 2.5A (Per Pin) 14PIN 2.0A (Per Pin)
16PIN 1.5A (Per Pin)
- Characteristics
Waterproof level: IP50 (Mating)
Operating temperature: -55°C ~ + 250°C
Corrosion resistance: 144 H salt mist, 5 % salt solution, 35°C
Humidity: up to 95% at 60° C
- Max wire size (AWG) : #20 for 2&3pin
#22 for 4&5pin
#24 for 6&7&8pin
#28 for 10&14&16pin
- RoHS compliance

Part No :

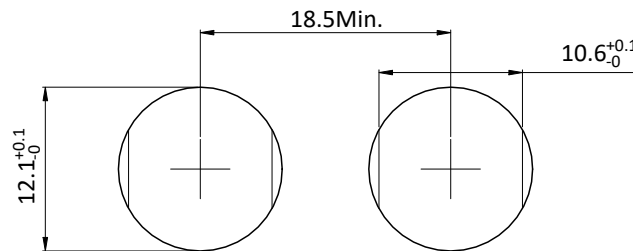
R - F 1 B R 1 0 0 4 0 0 0 0 0

Contact POS.
02-16=2PIN-16PIN

Shell material
0=Brass

Code	Contact type
2	Male solder contact
4	Female solder contact

Code	Key angles
0	0°
A	30°
B	60°
..	..



Panel cut-out

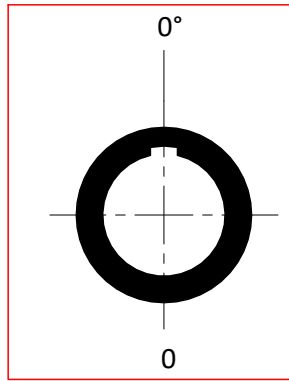
RoHS COMPLIANT	Unit:mm(inch)	PROJECTION	ZCables.com		PD./FILE NO.
	GENERAL TOLERANCES: (UNLESS SPECIFIED)	D.R. 11/03/2023	TITLE		REV. 01
	0 =±1 (0.039)	Philip	1B Metal series, 10 Pin, Receptacle, Female Contact, Fixed Socket, Solder, Snap Latch, IP50(Mating) Connector		
	0.0 =±.5 (0.02)	CH.K 11/03/2023	SCALE	SIZE	PART NO.
0.00 =±.3 (0.012)	Philip	1:1	A4	PZACF1BXD12101	
0.000=±.15(0.006)	APV.D 11/03/2023				
0° =± 2'	Richard				
0.0° =± 1'					

THIS DRAWING AND THE DATA DISCLOSED HEREIN OR HEREWITH IS NOT TO BE REPRODUCED USED OR DISCLOSED IN WHOLE OR IN PART TO ANYONE WITHOUT THE PERMISSION OF JESS-LINK PRODUCTS CO.,LTD.(JPC)

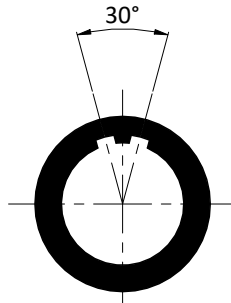
CUSTOMER DRAWING
DRWC-XXXXXX

REV.	ECN NO.	DESCRIPTION	MDF'D	APP'D	DATE
01		INITIAL DESIGN	Philip	Richard	11/03/2023
02					
03					

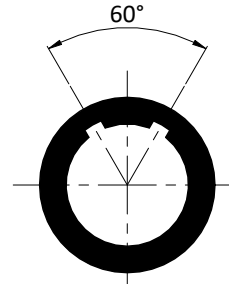
Key angles (receptacle front view) :



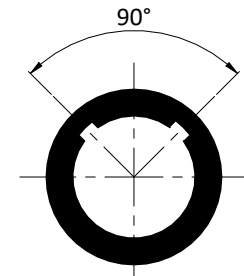
0



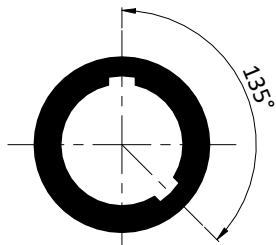
A



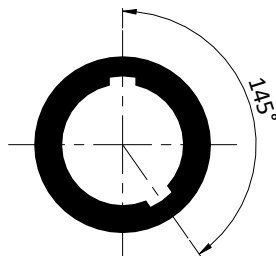
B



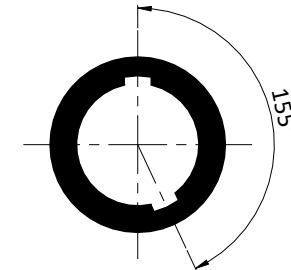
C



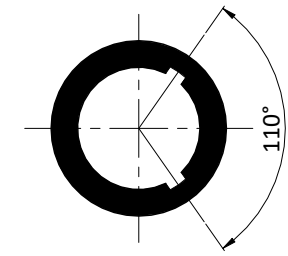
M



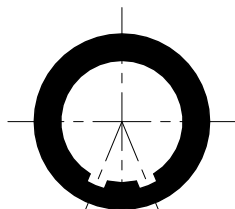
U



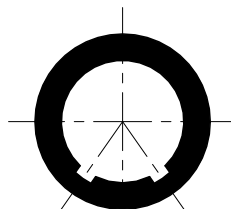
X



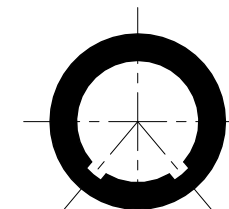
Q



J



H



P

RoHS COMPLIANT	Unit:mm(inch)	PROJECTION 	ZCables.com	
	GENERAL TOLERANCES: (UNLESS SPECIFIED) 0 =±1 (0.039) 0.0 =±.5 (0.02) 0.00 =±.3 (0.012) 0.000=±.15(0.006) 0° =± 2° 0.0° =± 1°			
	D.R. 11/03/2023 Philip	TITLE 1B Metal series, 10 Pin, Receptacle, Female Contact, Fixed Socket, Solder, Snap Latch, IP50(Mating) Connector		REV. 01
	CH.K 11/03/2023 Philip	SCALE 1:1	SIZE A4	PART NO. PZACF1BXD12101
APV.D 11/03/2023 Richard				SHEET 2 OF 2